

# PHOTOMETRIC TEST REPORT

---

MIURA WALL MATT GOLD

astro

## LIGHT EFFICIENCY:

49 Lumen/Watt

## LIGHT QUALITY:

CRI: 80.1

## COLOR TEMPERATURE:

2626 K

OUTPUT: 367 lm

PEAK: 210 cd

POWER: 7.5 W

PF: 0.55

Tracking number: [n/a](#)

Product name:

Miura Wall Matt Gold

Item number:

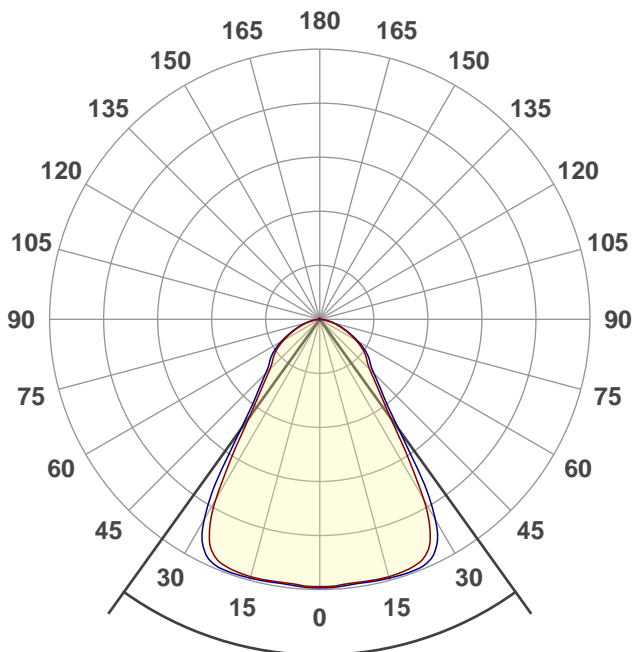
1444003

Date and time:

18/02/2021 10:56:26

Description:

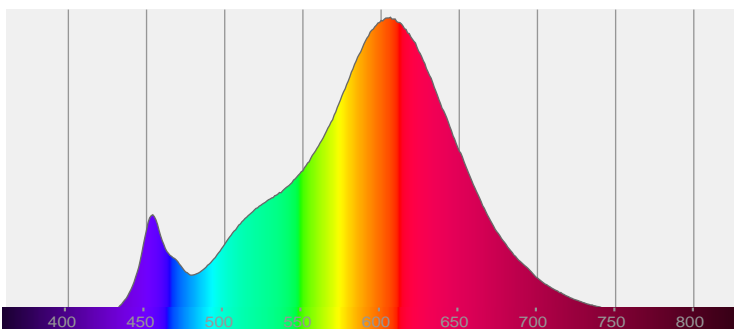
IP20 LED Wall Light



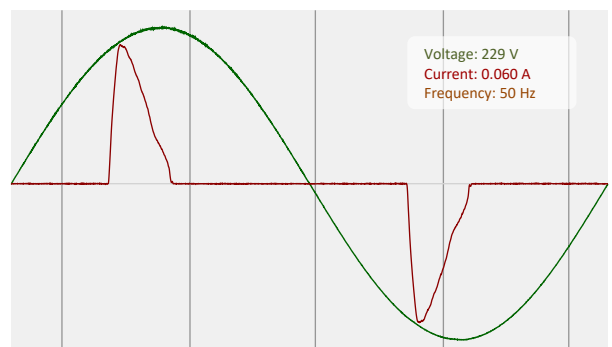
71.4°

CIE 1931  
x: 0.468  
y: 0.415

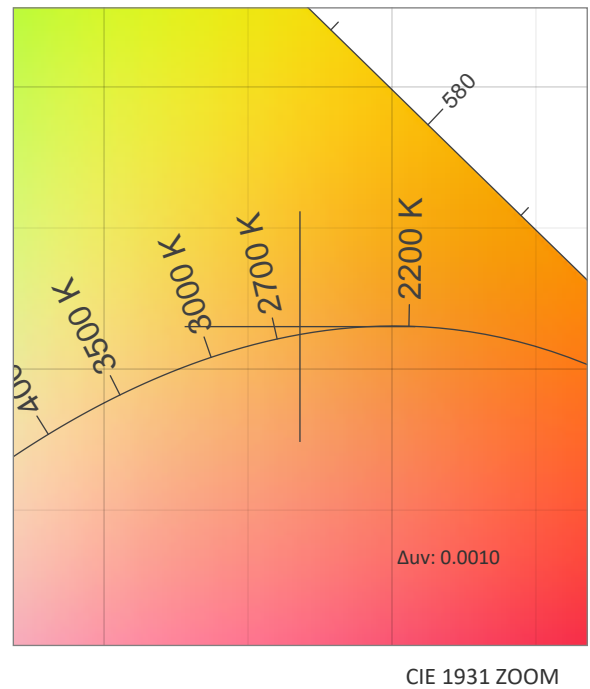
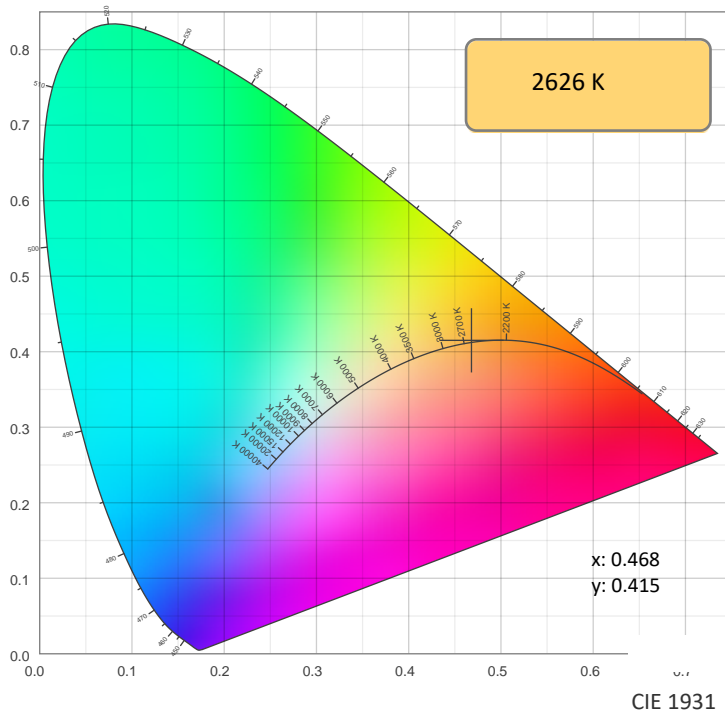
## SPECTRA



## POWER

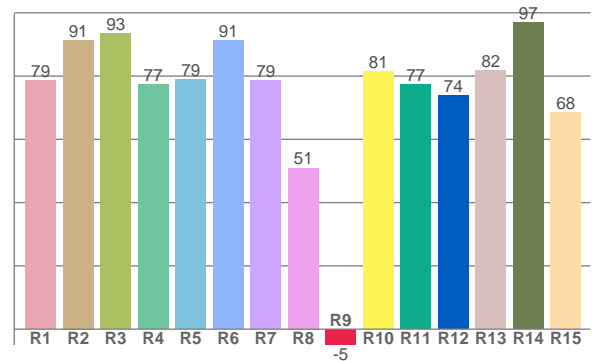
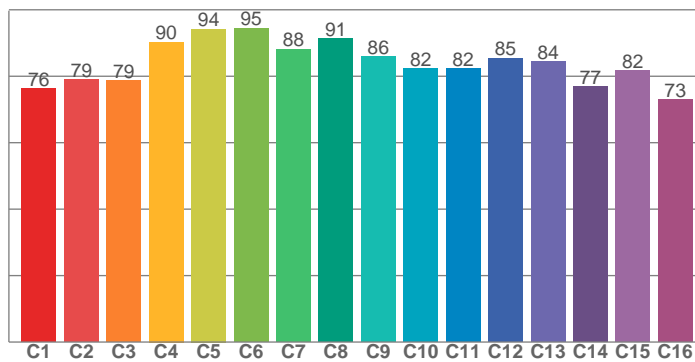


## COLOR DETAILS



TM30: 83.8

CRI: 80.1 (R1-R8)



CRI R values, only R1-R8 are used to calculate final CRI value

R1	R2	R3	R4	R5	R6	R7	R8	R9	R10	R11	R12	R13	R14	R15
78.6	91.4	93.4	77.4	79.0	91.3	78.5	51.0	-5.0	81.5	77.3	73.8	81.7	97.0	68.5

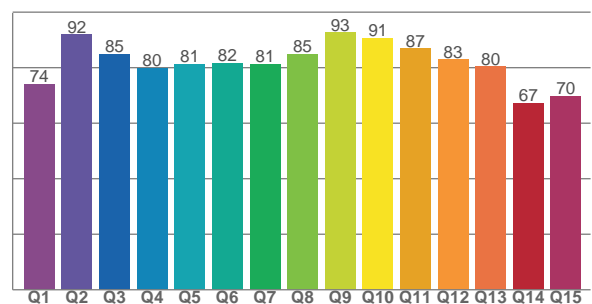
TM30 C values, 16 binned values out of total of 99 C values

C1	C2	C3	C4	C5	C6	C7	C8	C9	C10	C11	C12	C13	C14	C15	C16
76.3	78.9	78.6	90.3	94.2	94.5	88.2	91.3	85.9	82.3	82.3	85.5	84.5	76.8	81.8	73.0

CQS Q values

Q1	Q2	Q3	Q4	Q5	Q6	Q7	Q8	Q9	Q10	Q11	Q12	Q13	Q14	Q15
74.0	91.9	84.9	80.0	81.4	81.8	81.4	85.0	92.6	90.7	86.9	82.9	80.4	67.3	69.7

CQS: 80.5



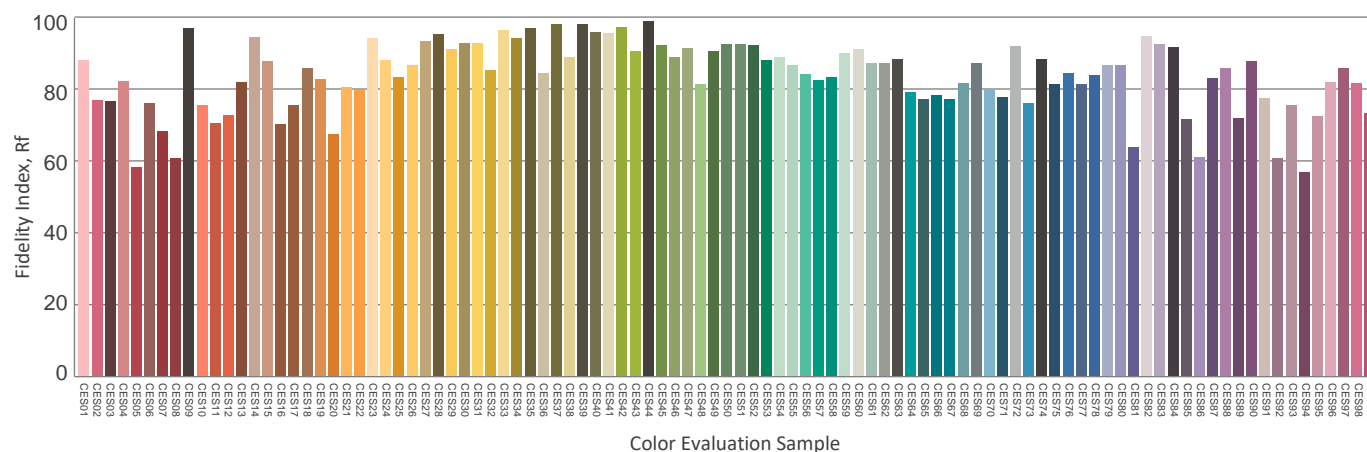
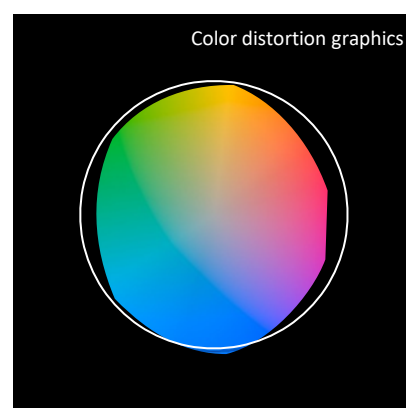
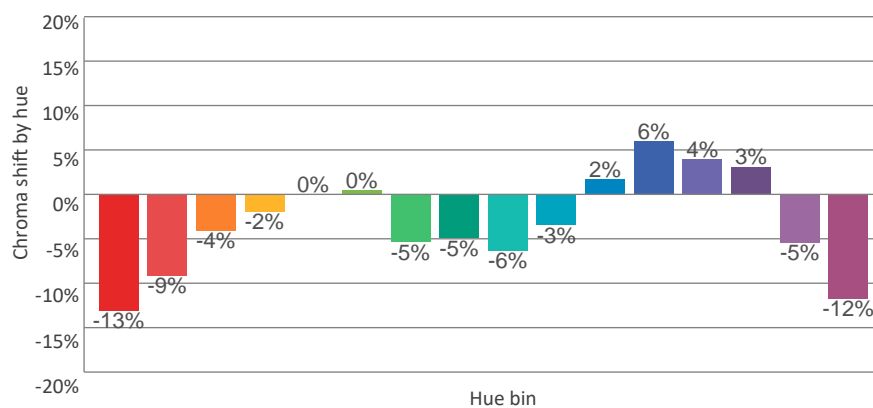
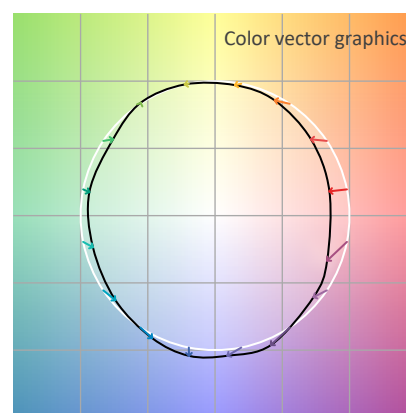
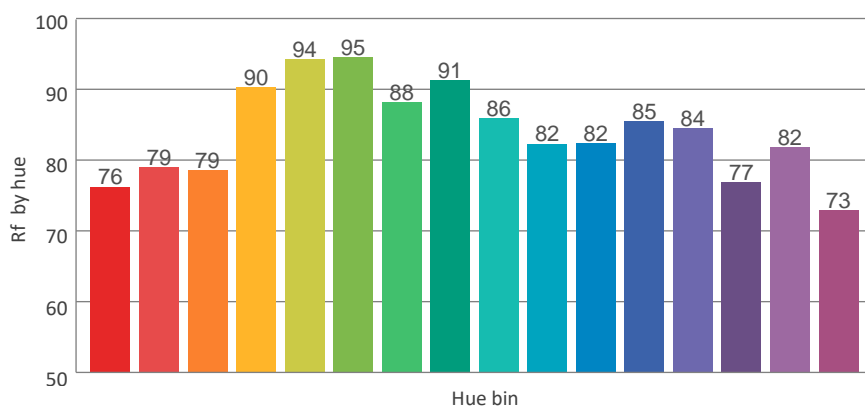
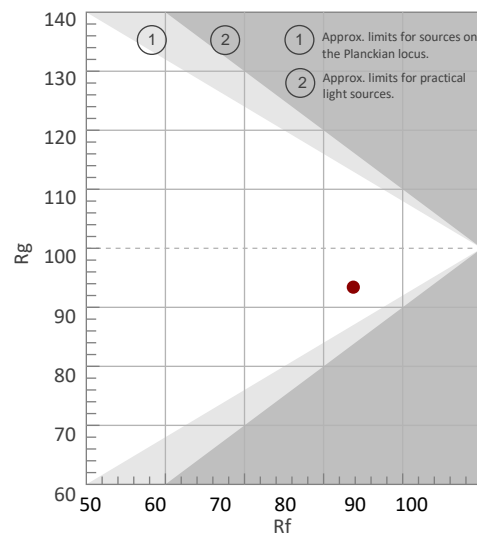
## COLOR PARAMETERS

Color temperature	Color rendering index	Red component	Color fidelity	Color gamut	Color quality scale	Color coordinate cie 1931	Color coordinate cie 1931	Color coordinate	Color coordinate	Color deviation from black body
CCT	CRI	CRI R9	TM30 Rf	TM30 Rg	CQS	x	y	u	v	$\Delta uv$
2626 K	80.1	-5.0	83.8	93.4	80.5	0.468	0.415	0.266	0.354	0.0010

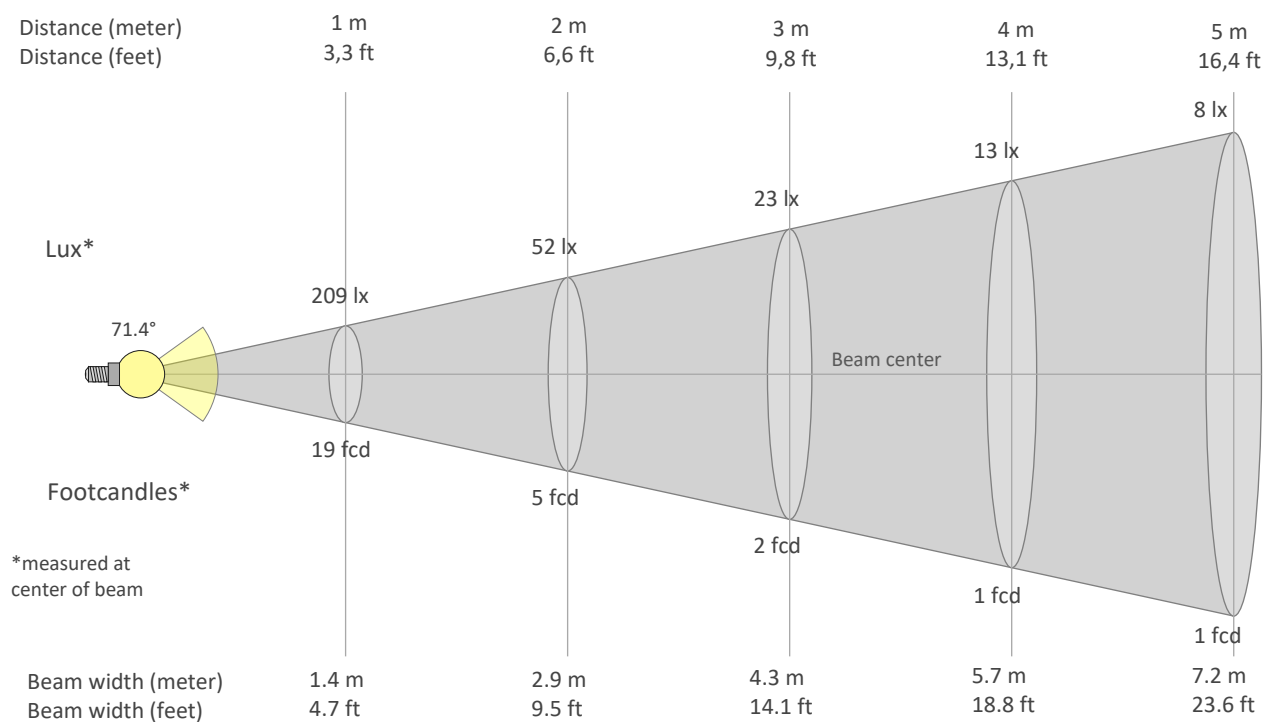
**Rf 83.8**  
Fidelity index Rf

**Rg 93.4**  
Gammut index Rg

Hue Bin	Graphic shifts (%)		
	R <sub>f</sub>	Chroma	Hue
1	76	-13%	1%
2	79	-9%	8%
3	79	-4%	11%
4	90	-2%	4%
5	94	0%	3%
6	95	0%	-1%
7	88	-5%	-5%
8	91	-5%	1%
9	86	-6%	5%
10	82	-3%	11%
11	82	2%	12%
12	85	6%	1%
13	84	4%	-11%
14	77	3%	-19%
15	82	-5%	-10%
16	73	-12%	-17%



## BEAM DETAILS



Beam intensities from 1-20m

1m	2m	3m	4m	5m	6m	7m	8m	9m	10m	11m	12m	13m	14m	15m	16m	17m	18m	19m	20m
3.3ft	6.6ft	9.8ft	13.1ft	16.4ft	19.7ft	23ft	26.2ft	29.5ft	32.8ft	36.1ft	39.4ft	42.7ft	45.9ft	49.2ft	52.5ft	55.8ft	59.1ft	62.3ft	65.6ft
209lx	52lx	23lx	13lx	8lx	6lx	4lx	3lx	3lx	2lx	2lx	1lx	1lx	1lx	1lx	1lx	1lx	1lx	1lx	1lx
19.4fcd	4.9fcd	2.2fcd	1.2fcd	0.8fcd	0.5fcd	0.4fcd	0.3fcd	0.2fcd	0.2fcd	0.2fcd	0.1fcd	0.1fcd	0.1fcd	0.1fcd	0.1fcd	0.1fcd	0.1fcd	0.1fcd	0fcd

Intensities in 0° c-plane

0°	5°	10°	15°	20°	25°	30°	35°	40°	45°	50°	55°	60°	65°	70°	75°	80°	85°	90°	95°
209	208	208	208	207	198	162	102	71	55	48	41	32	24	17	11	6	2	0	0
100%	99%	99%	99%	99%	95%	77%	49%	34%	26%	23%	20%	16%	12%	8%	5%	3%	1%	0%	0%

Intensities in 90° c-plane

0°	5°	10°	15°	20°	25°	30°	35°	40°	45°	50°	55°	60°	65°	70°	75°	80°	85°	90°	95°
209	209	209	209	209	205	179	114	77	60	51	44	35	26	18	12	6	2	0	0
100%	100%	100%	100%	100%	98%	86%	54%	37%	29%	24%	21%	17%	12%	9%	6%	3%	1%	0%	0%

Intensities in 180° c-plane

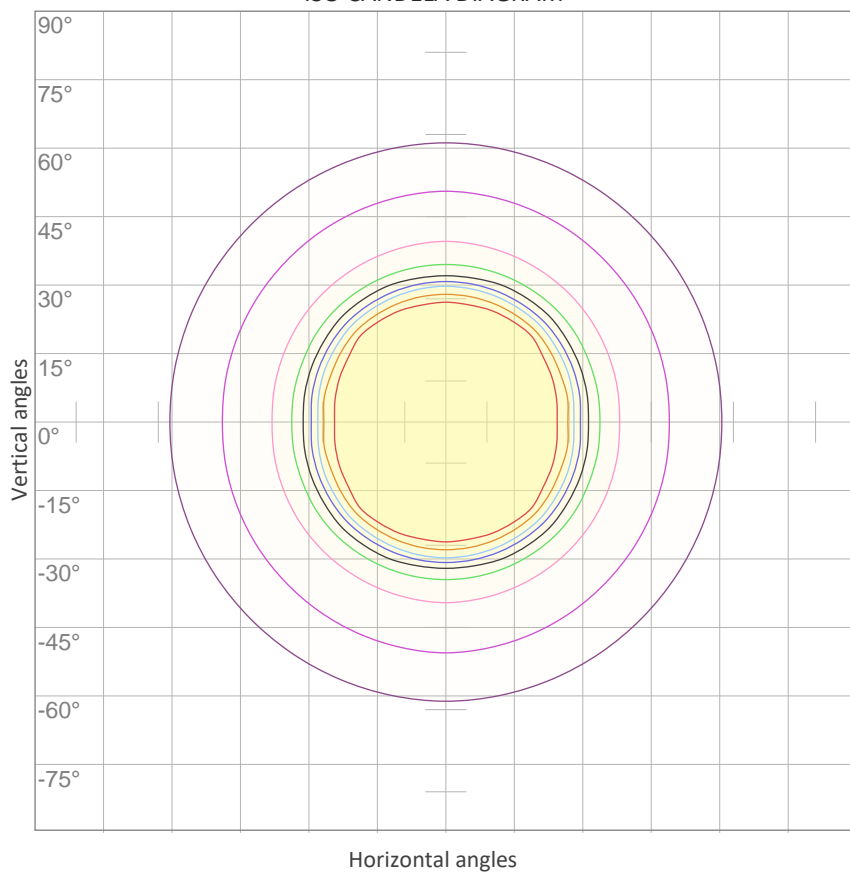
0°	5°	10°	15°	20°	25°	30°	35°	40°	45°	50°	55°	60°	65°	70°	75°	80°	85°	90°	95°
209	208	208	208	207	198	162	102	71	55	48	41	32	24	17	11	6	2	0	0
100%	99%	99%	99%	99%	95%	77%	49%	34%	26%	23%	20%	16%	12%	8%	5%	3%	1%	0%	0%

Intensities in 270° c-plane

0°	5°	10°	15°	20°	25°	30°	35°	40°	45°	50°	55°	60°	65°	70°	75°	80°	85°	90°	95°
209	209	209	209	209	205	179	114	77	60	51	44	35	26	18	12	6	2	0	0
100%	100%	100%	100%	100%	98%	86%	54%	37%	29%	24%	21%	17%	12%	9%	6%	3%	1%	0%	0%

Beam angle 50%	Field angle 10%	Cutoff angle 2,5%	Intensity ratio in 120° cone	Intensity ratio in 90° cone
71.4°	135.1°	162.1°	88.7%	72.7%

ISO CANDELA DIAGRAM



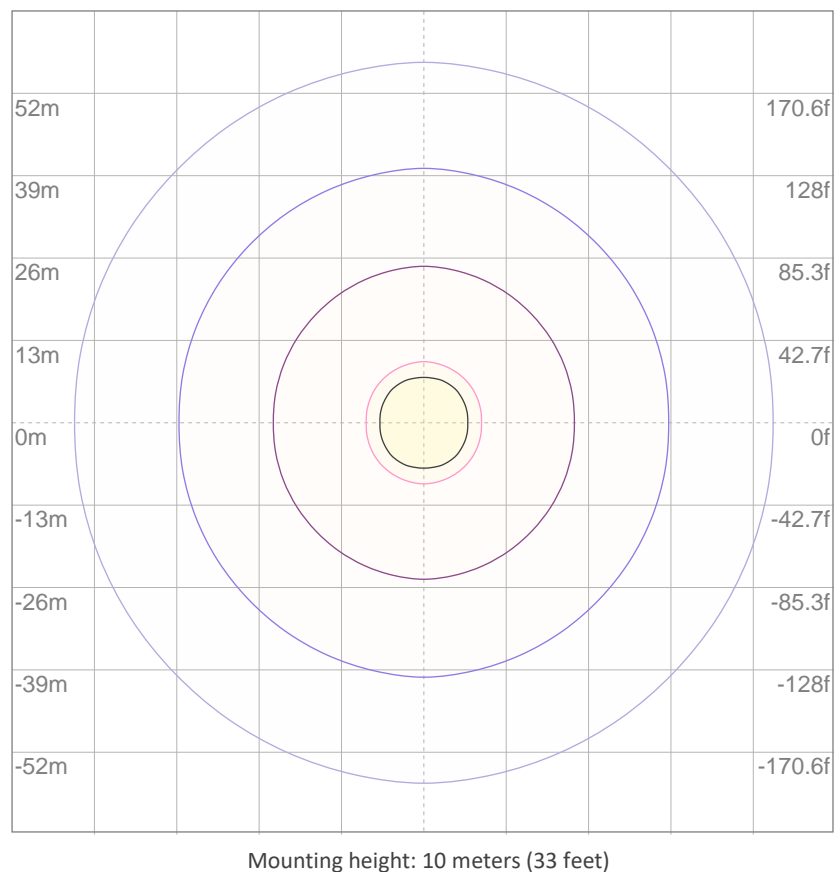
10%	21 cd
20%	42 cd
30%	63 cd
40%	84 cd
50%	105 cd
60%	126 cd
70%	146 cd
80%	167 cd
90%	188 cd

Conditions:

Number of c-planes: 8

Candela at center: 209 cd

ISO LUX DIAGRAM



3%	62.8m lx
5%	0.105 lx
10%	0.209 lx
30%	0.628 lx
50%	{LUX_10M50} lx

Conditions:

Number of c-planes: 8

Lux at center: 2.09 lx

Lux distribution on a surface when lamp is mounted at 10 meters from the surface.

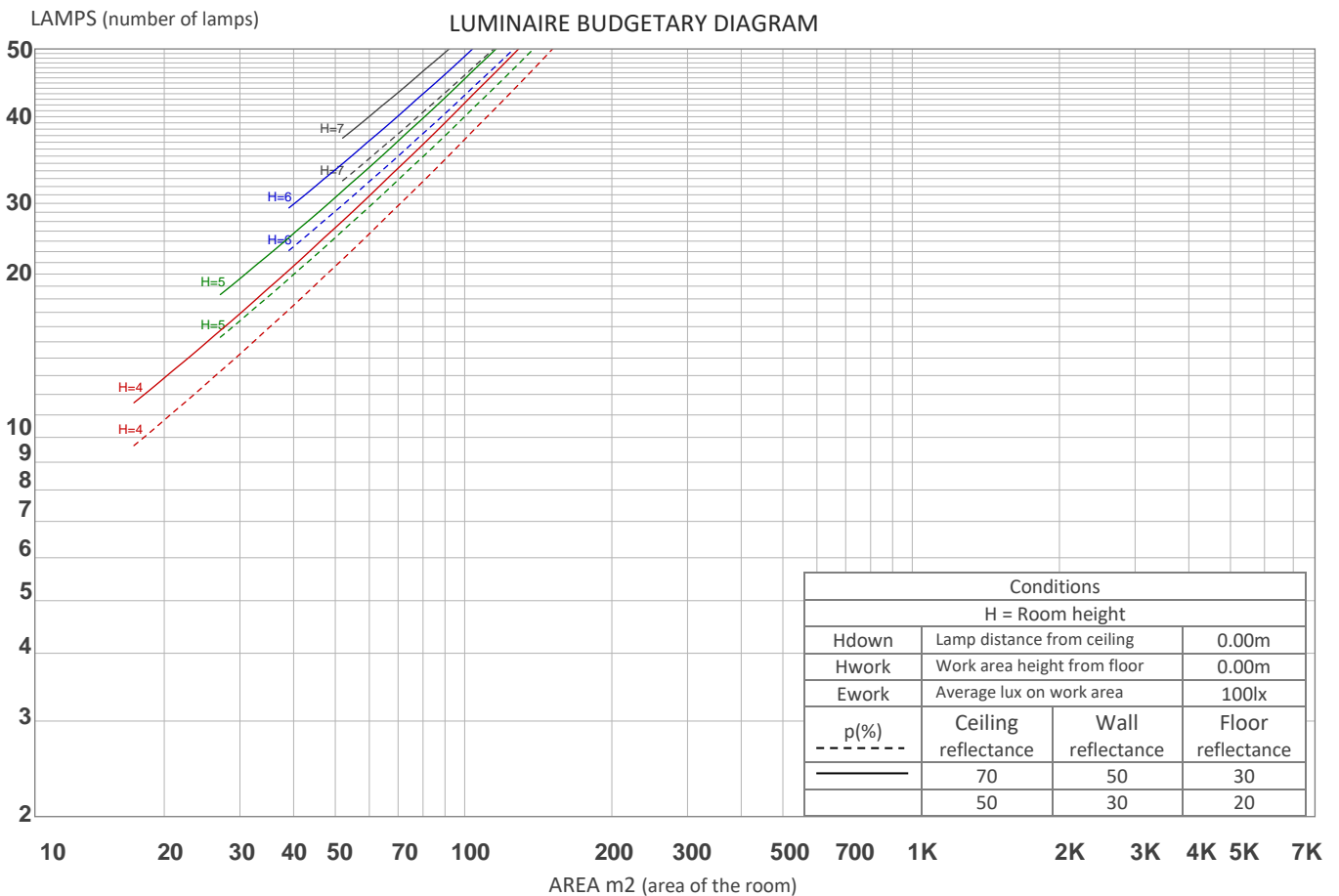
## UGR

## GLARE EVALUATION ACCORDING TO UGR

p Ceiling		70	70	50	50	30	70	70	50	50	30
p Walls		50	30	50	30	30	50	30	50	30	30
p Floor		20	20	20	20	20	20	20	20	20	20
Room size X    Y		Viewing direction at right angles to lamp axis					Viewing direction parallel to lamp axis				
2H	2H	18.2	19.1	18.4	19.4	19.6	18.5	19.5	18.7	19.7	20.0
	3H	18.5	19.6	18.9	19.8	20.0	18.9	19.9	19.3	20.1	20.3
	4H	18.6	19.6	19.1	19.9	20.1	19.0	20.0	19.4	20.2	20.5
	6H	18.7	19.6	19.0	19.9	20.3	19.1	19.9	19.4	20.2	20.6
	8H	18.7	19.5	19.0	19.8	20.3	19.0	19.9	19.4	20.2	20.6
	12H	18.7	19.5	19.0	19.8	20.3	19.0	19.8	19.4	20.1	20.6
4H	2H	18.3	19.3	18.7	19.6	19.8	18.6	19.6	19.0	19.9	20.1
	3H	19.0	19.7	19.3	20.1	20.5	19.2	20.0	19.6	20.4	20.8
	4H	19.1	19.8	19.5	20.2	20.8	19.3	20.1	19.8	20.5	21.0
	6H	19.1	19.8	19.6	20.2	20.6	19.4	20.1	19.9	20.5	20.9
	8H	19.1	19.8	19.6	20.1	20.5	19.4	20.1	19.9	20.4	20.8
	12H	19.1	19.6	19.6	20.0	20.5	19.4	19.9	19.9	20.3	20.8
8H	4H	19.1	19.7	19.6	20.1	20.5	19.3	20.0	19.9	20.4	20.8
	6H	19.2	19.7	19.7	20.1	20.7	19.5	19.9	20.0	20.4	21.0
	8H	19.2	19.6	19.8	20.2	20.8	19.5	19.9	20.0	20.4	21.1
	12H	19.2	19.5	19.8	20.1	20.7	19.5	19.8	20.1	20.3	20.9
12H	4H	19.0	19.6	19.5	20.0	20.5	19.3	19.8	19.8	20.3	20.7
	6H	19.2	19.6	19.7	20.1	20.8	19.5	19.9	20.0	20.4	21.0
	8H	19.2	19.5	19.8	20.1	20.7	19.5	19.8	20.1	20.3	20.9
Variation of the observer position for the luminaire distance S											
S = 1.0H		1.3 / -0.8					1.5 / -0.9				
S = 1.5H		2.7 / -1.6					3.0 / -1.7				
S = 2.0H		4.0 / -2.7					4.4 / -2.8				
Standard table		n/a					n/a				
Correction summand		n/a					n/a				
Corrected glare indices referring to 367 lm total luminous flux											

## COEFFICIENTS OF UTILIZATION

Ceiling reflectance	80				70				50			30			10			0
Wall reflectance	70	50	30	10	70	50	30	10	50	30	10	50	30	10	50	30	10	0
Floor reflectance	20	20	20	20	20	20	20	20	20	20	20	20	20	20	20	20	20	0
RCR	(RCR: Room Cavity Ratio) Room Values are expressed as percentage of Lumens delivered to the task surface																	
0	119	119	119	119	116	116	116	116	111	111	111	106	106	106	102	102	102	99
1	111	107	104	101	108	105	102	99	101	98	96	97	95	93	93	91	90	88
2	103	96	91	86	100	94	89	85	91	87	83	88	84	81	85	82	79	77
3	96	87	80	75	93	85	79	74	82	77	73	80	75	71	77	73	70	68
4	89	79	71	66	87	78	71	65	75	69	65	73	68	64	71	66	63	61
5	83	72	64	59	81	71	64	58	69	63	58	67	61	57	65	60	57	55
6	78	66	58	53	76	65	58	53	63	57	52	62	56	52	60	55	51	49
7	73	61	53	48	71	60	53	48	59	52	47	57	51	47	56	51	47	45
8	68	56	49	44	67	56	49	44	54	48	43	53	47	43	52	47	43	41
9	64	52	45	40	63	52	45	40	51	44	40	50	44	40	49	43	40	38
10	61	49	42	37	59	48	42	37	47	41	37	47	41	37	46	40	37	35



## ZONAL LUMEN SUMMARY

0°-10°	10°-20°	20°-30°	30°-40°	40°-50°	50°-60°	60°-70°	70°-80°	80°-90°
19.9 lm	59.1 lm	92.1 lm	71.9 lm	45.5 lm	37.5 lm	24.7 lm	12.0 lm	2.60 lm
90°-100°	100°-110°	110°-120°	120°-130°	130°-140°	140°-150°	150°-160°	160°-170°	170°-180°
0.227 lm	0.314 lm	0.351 lm	0.342 lm	0.336 lm	0.254 lm	0.171 lm	0.113 lm	0.040 lm

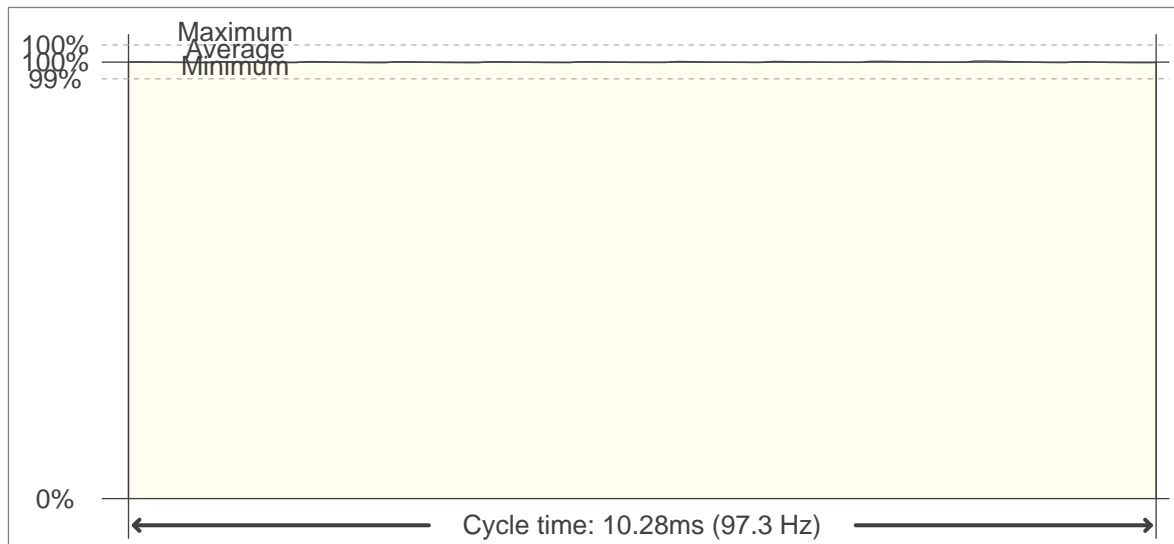


## FLICKER

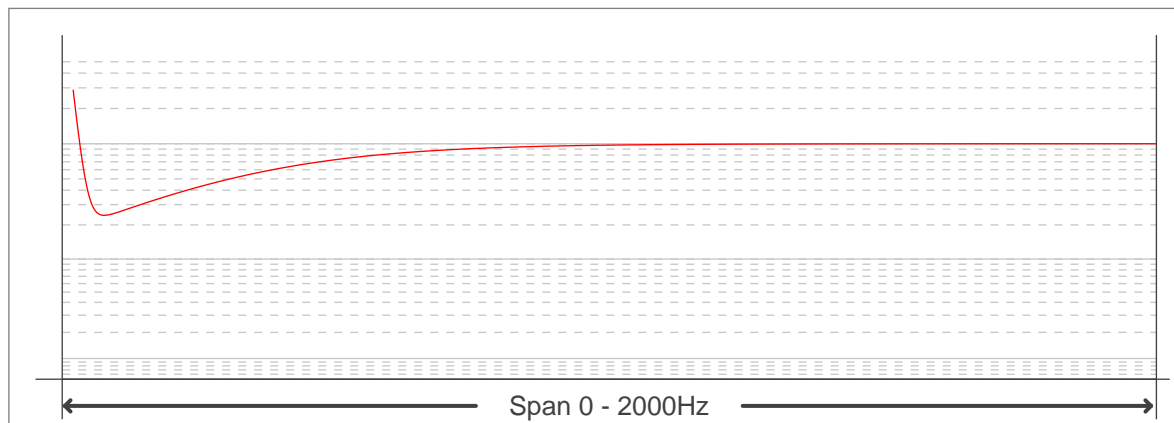
## FLICKER CURVE (COMPLETE SAMPLED FLICKER)



## FLICKER FRAME (FRAME OF ONE FLICKER PERIOD)



## FLICKER FFT (FREQUENCY SCOPE OF FLICKER CURVE)



## FLICKER RESULTS:

Flicker frequency:	97.32 Hz
Flicker index:	0
Flicker percentage:	0.28 %
SVM: (Visual flicker)	0

## FLICKER CONDITIONS:

Sample rate:	40000 samples/second
--------------	----------------------